

INFO MARCH 2025

Dear Customers,

winter is over and we bring you the first Info flyer of the year. This year we have prepared very interesting news for you and we are bringing you the first batch already now, so read carefully so that you don't miss anything.

- New MULTI-DRIVE PRO drives
- Accessories for MULTI-DRIVE PRO drives
- New Technical documentation 2025

New MULTI-DRIVE PRO drives

The most important innovation of this year is a completely new operator for garage and industrial doors MULTI-DRIVE PRO, which is produced on a newly installed semi-automatic production line of the company FMK motorized s.r.o. in Kroměříž, Czech Republic.

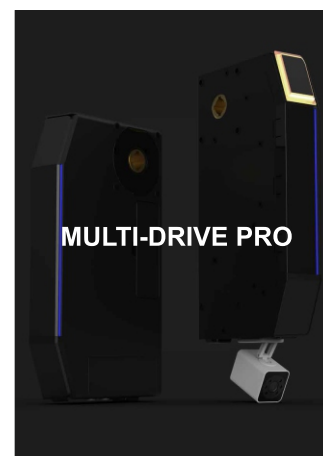
The MULTI-DRIVE PRO drive has a basic application as industrial drive, mounted on a shaft.

However, with the help of a special adapter, it can also be used as a ceiling drive with a nylon belt rail. The possibility of installation directly above the construction opening between the springs is also in preparation. These drives are offered in three force levels: 1000N, 1500N and 1800N.

Further information can be found on our website here:

[MULTI-DRIVE PRO/Garagedoor Kružík](#)

and also in this brochure, which you can download here:



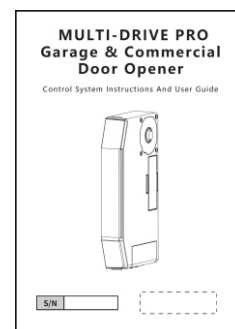
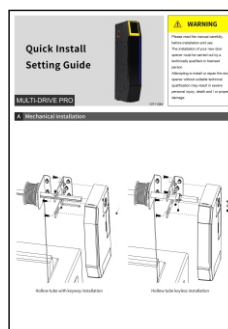
In the basic price the customer always receives the MULTI-DRIVE PRO drive including accessories for side installation, an integrated receiver for wireless security elements, 2 pcs RC07 transmitters 868 MHz, an integrated WiFi module and a wireless electric lock for locking the vertical guide rail.



These drives can already be ordered. In the online ordering form they are also available.

The prices of the MULTI-DRIVE PRO drives are very favourable. If you are interested your sales representative will send you these prices.

MULTI-DRIVE PRO drives will be supplied with a simplified manual. This manual can be downloaded here:



Follow these instructions to set the basic engine functions. At the end you will find a QR code that will take you to the full version of the manual.

The full version of the manual, which is quite extensive, will not be needed in most cases. However, you can download the full manual here:



INFO MARCH 2025

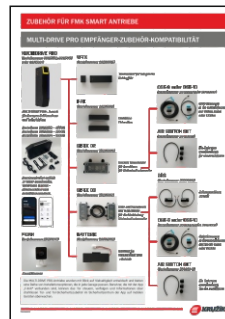
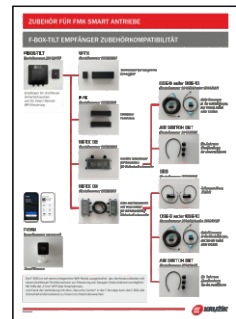
New MULTI-DRIVE PRO drives




Accessories for MULTI-DRIVE PRO drives

The offer of accessories for MULTI-DRIVE PRO drives is very wide. For better orientation, we have created an overview of the compatibility of accessories for the MULTI-DRIVE PRO drives as well as for the receiver for safety wireless elements with Wi-Fi. This universal receiver which can be used for any door is called F-BOX-TILT.

You can download this compatibility overview here: 


MULTI-DRIVE PRO

F-BOX-TILT


There are manuals available for all accessories for MULTI-DRIVE PRO drives. These manuals can be downloaded here: 


SMART

New Technical documentation 2025

We would like to inform you that after several years the complete Technical documentation has been updated and extended again.

As the main news we can mention the incorporation of various variants of Q LINE fittings, including the variant for zero headroom. In addition, HLO 400, HLO 500, VLO 400 and VLO 500 fittings have been added.

Please ask your sales representative for the new Technical documentation 2025 in printed form.

You can download the electronic version here: 

OBRAZ	STRANA
SEZNAM OBSAHU	1-2
INHALT	1-2
INDEX	1-2
SEZNAM OBSAHU	3-4
INHALT	3-4
INDEX	3-4
SEZNAM OBSAHU	5-6
INHALT	5-6
INDEX	5-6
SEZNAM OBSAHU	7-8
INHALT	7-8
INDEX	7-8
SEZNAM OBSAHU	9-10
INHALT	9-10
INDEX	9-10
SEZNAM OBSAHU	11-12
INHALT	11-12
INDEX	11-12
SEZNAM OBSAHU	13-14
INHALT	13-14
INDEX	13-14
SEZNAM OBSAHU	15-16
INHALT	15-16
INDEX	15-16
SEZNAM OBSAHU	17-18
INHALT	17-18
INDEX	17-18
SEZNAM OBSAHU	19-20
INHALT	19-20
INDEX	19-20
SEZNAM OBSAHU	21-22
INHALT	21-22
INDEX	21-22
SEZNAM OBSAHU	23-24
INHALT	23-24
INDEX	23-24
SEZNAM OBSAHU	25-26
INHALT	25-26
INDEX	25-26
SEZNAM OBSAHU	27-28
INHALT	27-28
INDEX	27-28
SEZNAM OBSAHU	29-30
INHALT	29-30
INDEX	29-30
SEZNAM OBSAHU	31-32
INHALT	31-32
INDEX	31-32
SEZNAM OBSAHU	33-34
INHALT	33-34
INDEX	33-34
SEZNAM OBSAHU	35-36
INHALT	35-36
INDEX	35-36
SEZNAM OBSAHU	37-38
INHALT	37-38
INDEX	37-38
SEZNAM OBSAHU	39-40
INHALT	39-40
INDEX	39-40
SEZNAM OBSAHU	41-42
INHALT	41-42
INDEX	41-42
SEZNAM OBSAHU	43-44
INHALT	43-44
INDEX	43-44
SEZNAM OBSAHU	45-46
INHALT	45-46
INDEX	45-46
SEZNAM OBSAHU	47-48
INHALT	47-48
INDEX	47-48
SEZNAM OBSAHU	49-50
INHALT	49-50
INDEX	49-50
SEZNAM OBSAHU	51-52
INHALT	51-52
INDEX	51-52
SEZNAM OBSAHU	53-54
INHALT	53-54
INDEX	53-54
SEZNAM OBSAHU	55-56
INHALT	55-56
INDEX	55-56
SEZNAM OBSAHU	57-58
INHALT	57-58
INDEX	57-58
SEZNAM OBSAHU	59-60
INHALT	59-60
INDEX	59-60
SEZNAM OBSAHU	61-62
INHALT	61-62
INDEX	61-62
SEZNAM OBSAHU	63-64
INHALT	63-64
INDEX	63-64
SEZNAM OBSAHU	65-66
INHALT	65-66
INDEX	65-66
SEZNAM OBSAHU	67-68
INHALT	67-68
INDEX	67-68
SEZNAM OBSAHU	69-70
INHALT	69-70
INDEX	69-70
SEZNAM OBSAHU	71-72
INHALT	71-72
INDEX	71-72
SEZNAM OBSAHU	73-74
INHALT	73-74
INDEX	73-74
SEZNAM OBSAHU	75-76
INHALT	75-76
INDEX	75-76
SEZNAM OBSAHU	77-78
INHALT	77-78
INDEX	77-78
SEZNAM OBSAHU	79-80
INHALT	79-80
INDEX	79-80
SEZNAM OBSAHU	81-82
INHALT	81-82
INDEX	81-82
SEZNAM OBSAHU	83-84
INHALT	83-84
INDEX	83-84
SEZNAM OBSAHU	85-86
INHALT	85-86
INDEX	85-86
SEZNAM OBSAHU	87-88
INHALT	87-88
INDEX	87-88
SEZNAM OBSAHU	89-90
INHALT	89-90
INDEX	89-90
SEZNAM OBSAHU	91-92
INHALT	91-92
INDEX	91-92
SEZNAM OBSAHU	93-94
INHALT	93-94
INDEX	93-94
SEZNAM OBSAHU	95-96
INHALT	95-96
INDEX	95-96
SEZNAM OBSAHU	97-98
INHALT	97-98
INDEX	97-98
SEZNAM OBSAHU	99-100
INHALT	99-100
INDEX	99-100
SEZNAM OBSAHU	101-102
INHALT	101-102
INDEX	101-102
SEZNAM OBSAHU	103-104
INHALT	103-104
INDEX	103-104
SEZNAM OBSAHU	105-106
INHALT	105-106
INDEX	105-106
SEZNAM OBSAHU	107-108
INHALT	107-108
INDEX	107-108
SEZNAM OBSAHU	109-110
INHALT	109-110
INDEX	109-110
SEZNAM OBSAHU	111-112
INHALT	111-112
INDEX	111-112
SEZNAM OBSAHU	113-114
INHALT	113-114
INDEX	113-114
SEZNAM OBSAHU	115-116
INHALT	115-116
INDEX	115-116
SEZNAM OBSAHU	117-118
INHALT	117-118
INDEX	117-118
SEZNAM OBSAHU	119-120
INHALT	119-120
INDEX	119-120
SEZNAM OBSAHU	121-122
INHALT	121-122
INDEX	121-122
SEZNAM OBSAHU	123-124
INHALT	123-124
INDEX	123-124
SEZNAM OBSAHU	125-126
INHALT	125-126
INDEX	125-126
SEZNAM OBSAHU	127-128
INHALT	127-128
INDEX	127-128
SEZNAM OBSAHU	129-130
INHALT	129-130
INDEX	129-130
SEZNAM OBSAHU	131-132
INHALT	131-132
INDEX	131-132
SEZNAM OBSAHU	133-134
INHALT	133-134
INDEX	133-134
SEZNAM OBSAHU	135-136
INHALT	135-136
INDEX	135-136
SEZNAM OBSAHU	137-138
INHALT	137-138
INDEX	137-138
SEZNAM OBSAHU	139-140
INHALT	139-140
INDEX	139-140
SEZNAM OBSAHU	141-142
INHALT	141-142
INDEX	141-142
SEZNAM OBSAHU	143-144
INHALT	143-144
INDEX	143-144
SEZNAM OBSAHU	145-146
INHALT	145-146
INDEX	145-146
SEZNAM OBSAHU	147-148
INHALT	147-148
INDEX	147-148
SEZNAM OBSAHU	149-150
INHALT	149-150
INDEX	149-150
SEZNAM OBSAHU	151-152
INHALT	151-152
INDEX	151-152
SEZNAM OBSAHU	153-154
INHALT	153-154
INDEX	153-154
SEZNAM OBSAHU	155-156
INHALT	155-156
INDEX	155-156
SEZNAM OBSAHU	157-158
INHALT	157-158
INDEX	157-158
SEZNAM OBSAHU	159-160
INHALT	159-160
INDEX	159-160
SEZNAM OBSAHU	161-162
INHALT	161-162
INDEX	161-162
SEZNAM OBSAHU	163-164
INHALT	163-164
INDEX	163-164
SEZNAM OBSAHU	165-166
INHALT	165-166
INDEX	165-166
SEZNAM OBSAHU	167-168
INHALT	167-168
INDEX	167-168
SEZNAM OBSAHU	169-170
INHALT	169-170
INDEX	169-170
SEZNAM OBSAHU	171-172
INHALT	171-172
INDEX	171-172
SEZNAM OBSAHU	173-174
INHALT	173-174
INDEX	173-174
SEZNAM OBSAHU	175-176
INHALT	175-176
INDEX	175-176
SEZNAM OBSAHU	177-178
INHALT	177-178
INDEX	177-178
SEZNAM OBSAHU	179-180
INHALT	179-180
INDEX	179-180
SEZNAM OBSAHU	181-182
INHALT	181-182
INDEX	181-182
SEZNAM OBSAHU	183-184
INHALT	183-184
INDEX	183-184
SEZNAM OBSAHU	185-186
INHALT	185-186
INDEX	185-186
SEZNAM OBSAHU	187-188
INHALT	187-188
INDEX	187-188
SEZNAM OBSAHU	189-190
INHALT	189-190
INDEX	189-190
SEZNAM OBSAHU	191-192
INHALT	191-192
INDEX	191-192
SEZNAM OBSAHU	193-194
INHALT	193-194
INDEX	193-194
SEZNAM OBSAHU	195-196
INHALT	195-196
INDEX	195-196
SEZNAM OBSAHU	197-198
INHALT	197-198
INDEX	197-198
SEZNAM OBSAHU	199-200
INHALT	199-200
INDEX	199-200